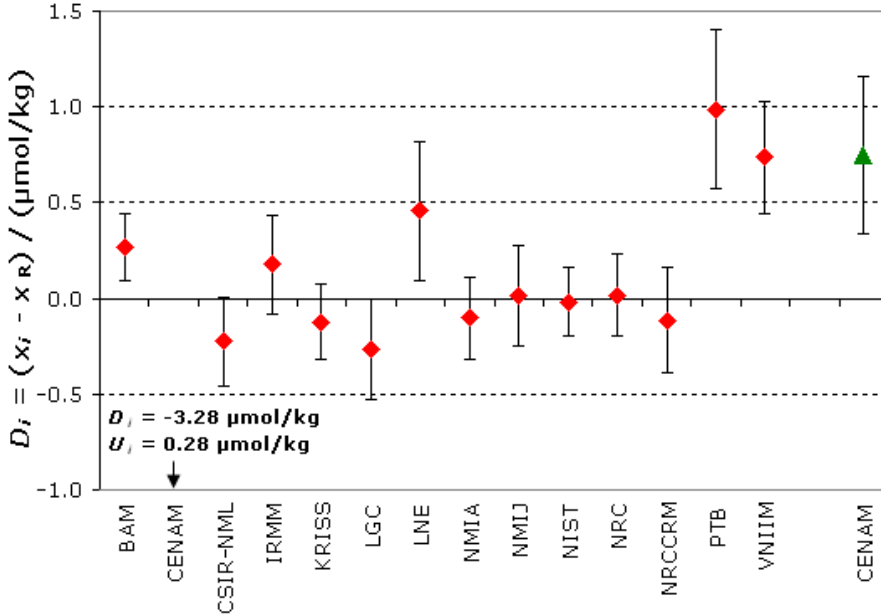


CCQM-K13 and CCQM-K13.1

MEASURAND : Amount content of Cadmium in sediment

NOMINAL VALUE : ~ 5.5 µmol/kg

Degrees of equivalence: D_i and expanded uncertainties U_i ($k = 2$) expressed in µmol/kg



Red diamonds: participants in CCQM-K13

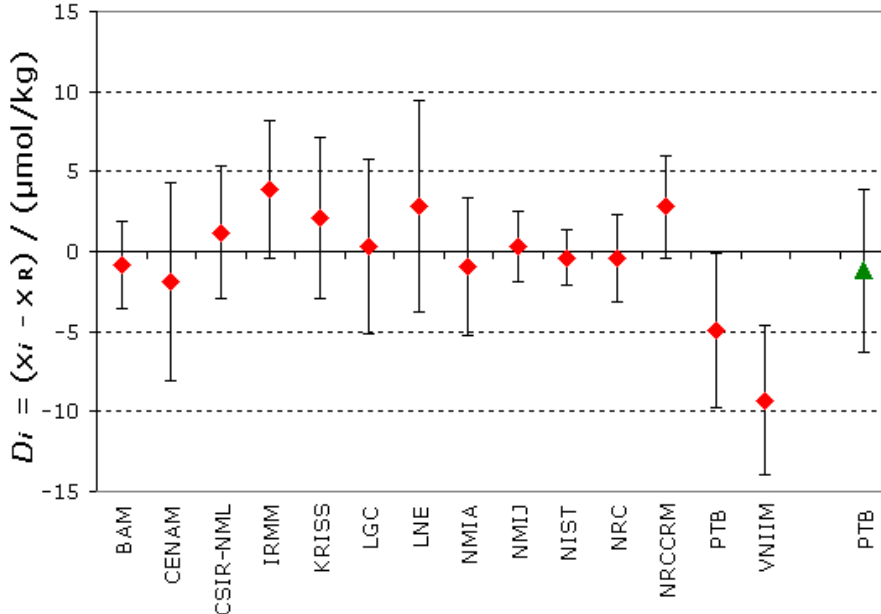
Green triangle: participant in CCQM-K13.1

CCQM-K13 and CCQM-K13.1

MEASURAND : Amount content of Lead in sediment

NOMINAL VALUE : ~ 170 µmol/kg

Degrees of equivalence: D_i and expanded uncertainties U_i ($k = 2$) expressed in µmol/kg



Red diamonds: participants in CCQM-K13

Green triangle: participant in CCQM-K13.1